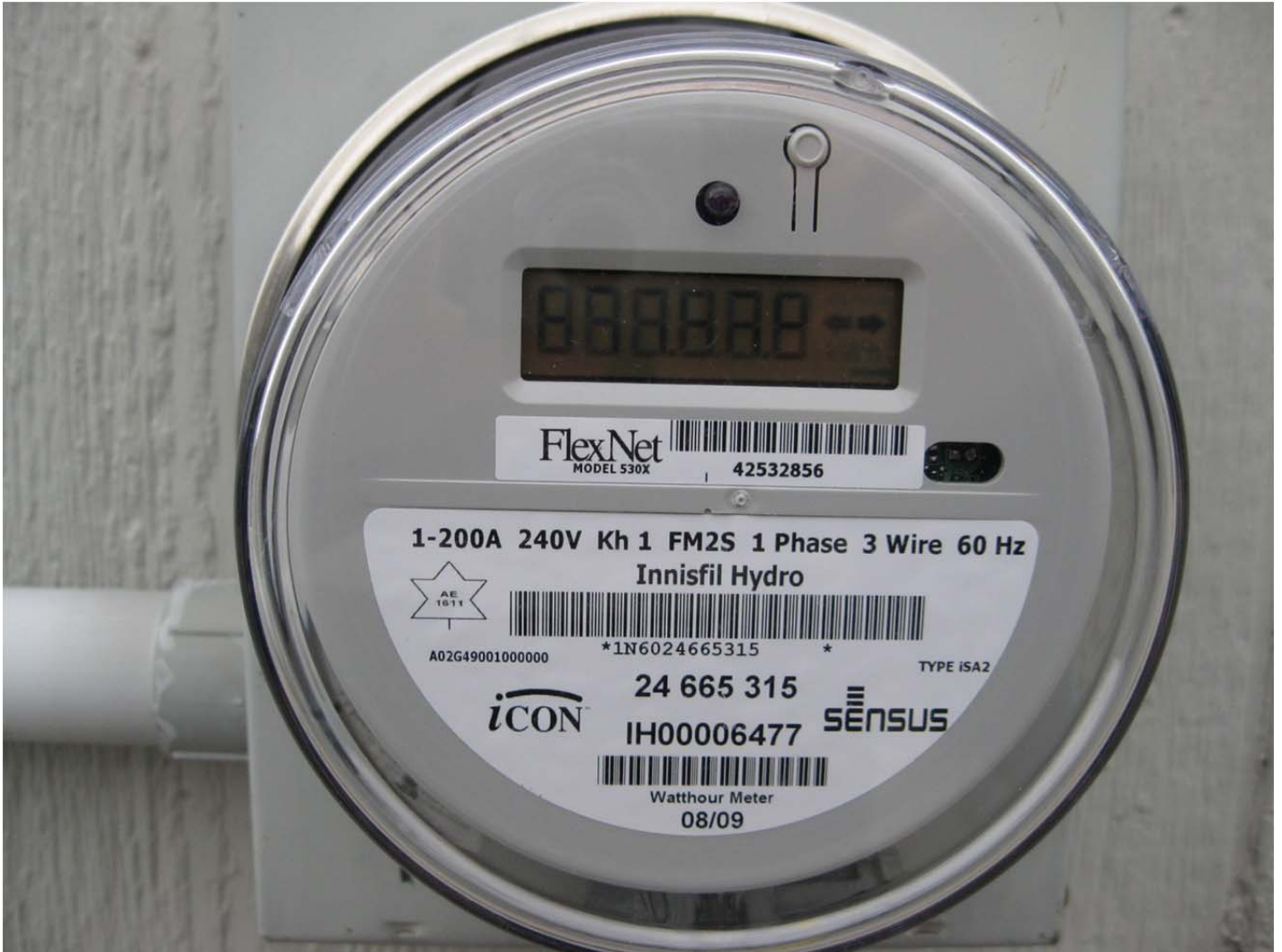


How To Read Your Smart Meter

Smart meters have five different display screens that you will be able to see.
They are as follows in the sequence as the meter shows them.

- 1) **Segment Display:** The display lights all the LED segments so we can see if any segments are burnt out.



- 2) **KWh Code Screen:** This is a programming code to indicate the next screen displayed will be for KWh.



3) **KWh Display Screen:** This is the actual KWh read.



4) **Current Code Screen:** This is a programming code to indicate the next screen displayed will be for system current.



- 5) **System Current Display:** This display indicates the system current being used at that point in time. This current is representing both the 120volt and 240volt loads.

