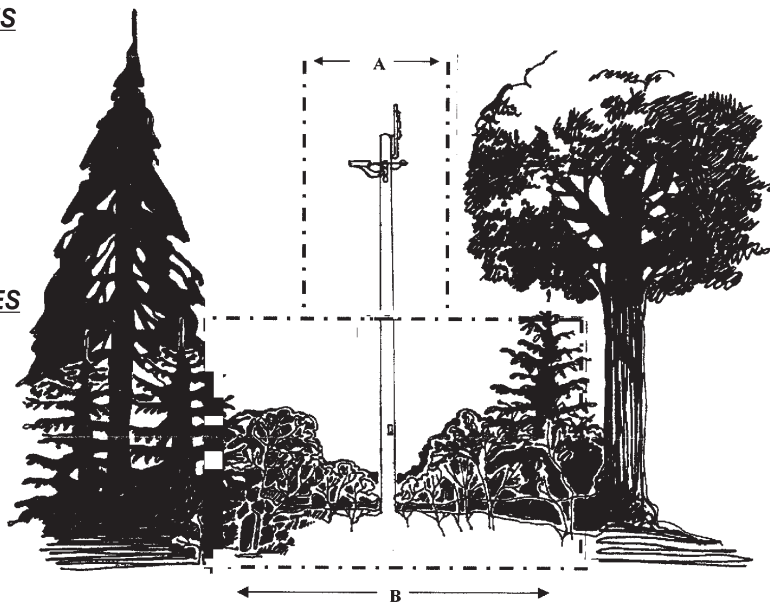


**COMPATIBLE SPECIES**

Sumac  
Raspberries  
Dogwood  
Alders  
Ground Juniper  
Lilac  
Apple

**INCOMPATIBLE SPECIES**

Poplar  
Maple  
Spruce  
Balsam  
Basswood  
Beech  
Ash  
Oak  
Pine  
Larch



**A. Area of Line Clearing  
(3 - 4 year cycle)**

Includes the trimming of branches away from energized power lines to ensure adequate clearances are maintained. These clearances can vary depending on line voltage and tree species growth rate. This is to provide system reliability and ensure public safety.

**B. Area of Underbrush  
(3 - 4 year cycle)**

We define brush as any incompatible species less than 15 cm (4") diameter when measured at a height of 1 meter from ground level.

## NOTICE

INNISFIL HYDRO has engaged a Professional Tree Service to trim the trees in your area to:

- increase public safety by reducing the hazard of children climbing trees beneath or beside power lines
- continually improve reliability of electric supply and minimize costly interruptions of electrical service caused by trees and brush interfering with power lines
- improve tree health through proper trimming by professional arborists
- maintain aesthetics of trees along Innisfil Hydro Distribution Systems (sometimes location of trees makes this difficult)

We will be clearing non-compatible brush and small trees (those defined as any woody vegetation under 4" in diameter measured 4' (1.2m) from ground) along with larger trees and limbs, located on or overhanging the road allowance that interfere with or could cause hazard to Innisfil Hydro lines. Compatible species will not be removed where practical. Please refer to the diagram on reverse side.

Tenants are asked to forward this notice to the property owner.

Should you have concerns regarding the potential impact our tree maintenance program will have, with respect to sensitive trees on or near your property, please notify our office in advance or consult with the Tree Service Company while in your area.

**(705) 431-4321 or (705) 458-4329**